

Legal Reasoning, Automated

LEGAL RISK MANAGEMENT SYSTEM

From Legal Analysis to Increased Court Efficiency
Enterprise Partnership with Microsoft and HPE



FOUNDERS



Laina Chan
Chief Legal Architect

- Dual honours degrees in Pure Mathematics and Law from the University of Sydney.
- “Clerked” for the Honourable Michael Kirby AC CMG and the Honourable MJR Clarke KC in NSW Court of Appeal.
- Practising Commercial Barrister with 20 years experience from BigLaw.
- The 2021 Lawyers Weekly Women in Law Awards 2021, Barrister of the Year.
- Author of books and peer reviewed journal articles which are on the curricula of many universities around Australia.
- Codifies the legal reasoning for the MiAI Law Architecture.



Arjun Jain
Chief Technical Officer

- Ph.D. Computer Science 2013 from Max Planck Institute for Informatics.
- Postdoc at NYU Courant Institute (2013–2015) with Yann LeCun (ex Meta) and Chris Bregler (Google DeepMind).
- Founder & Chief Scientist of FastCode AI (2015–Present).
- Adjunct faculty at IISc (2020–Present) and IIT Bombay (2016–2019).
- **Trusted by Mercedes Benz, Bosch, Saudi Aramco, Meta, Indian Defence Sector**
- Holds patents in AI-driven human sensing and automotive safety.
- Delivers the System Architecture to support the legal reasoning codified by Laina.

COMPANY SNAPSHOT

MiAI Law was **founded** in 2024 with a Cayman Islands holding entity.

Strategic Enterprise Partnership with **Microsoft** and **HPE**.

Singapore provisional **patent** application no. 10202502330S covering legal reasoning methodology.

► Watch the product demo at

<https://miai.law/gen-ai-practice-solutions/>

THE PROBLEM

● Too Much Law, Multiple Tools, More Risk

Speed is no longer the constraint.

Reasoning integrity is.

Cognitive
Overload

Fragmented
Workflows

Hidden Risk

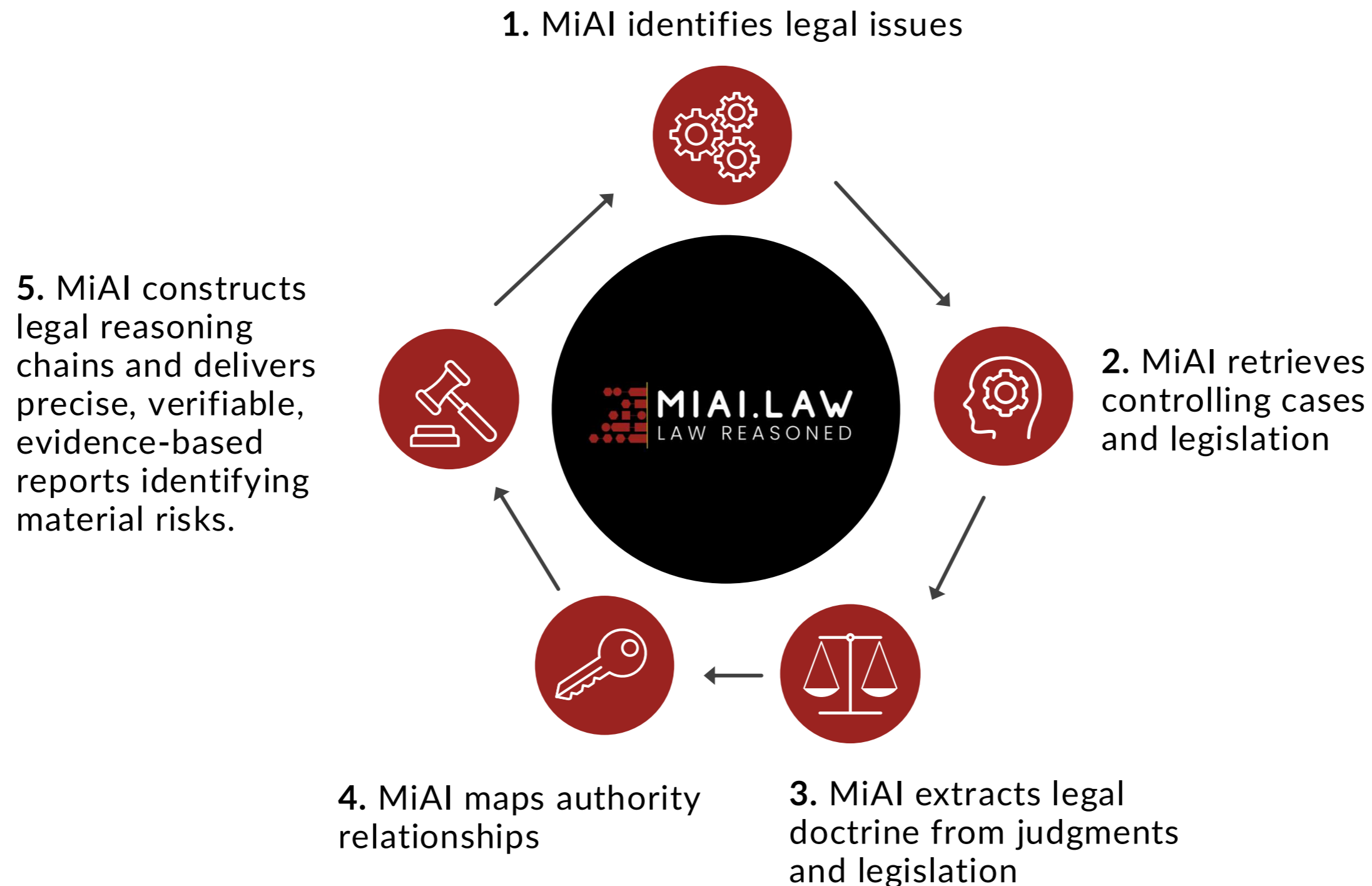
The volume of law has exploded beyond human cognitive limits.

Winning positions fail not because lawyers lack information – but because something important is missed.

Fluent outputs create false confidence.

REVOLUTIONARY SOLUTION

MIAI IS A FIRST MOVER



Beyond LLMs

Legal Reasoning applied across the legal workflow

1

Legal Research grounded in primary law and first principles.

2

Contract Review & Audit
Will your contract stand up in court?

3

Word Plug-Ins and agents embedded in Microsoft Co-pilot.

4

CheckMate Audit features – verify legal propositions and identify hallucinations in any legal document, perfect your originating process plus unearth errors in judgments and prepare a draft notice of appeal

WHY MiAI?

Lawyers from National and International Law Firms as well as enterprises are trialling MiAI Law.

This is the way of the future. It is great to see an Australian at the forefront.

The Honourable Michael Kirby AC CMG

It is, without exaggeration, AI for lawyers on steroids, and will become an essential part of a lawyer's toolkit.

Danny Feller SC

In contract review, MiAI's real value is not automation for its own sake, but directing attention toward material risk - with its negotiation pack then carrying that focus through into the negotiation itself.

Harshita Nandni, In-House Counsel

My firm has been trialling MiAI Law. The output is more comprehensive and reliable than any other AI product I have seen.

Steven Lurie, Partner, Clyde & Co

MiAI's research capabilities provide a strong foundation for Australian legal research. It surfaces well-linked authorities with accurate paragraph references, including some I was unable to locate on other platforms, and it performs noticeably better than comparable tools.

Jan Hards, Partner and Head of AI
Johnson Winter Slattery

The contract/agreement review function is groundbreaking. ... Legislative research is made easy. MiAI's legal AI research partner has been designed by a practising lawyer – for lawyers. This is a product you need to try for yourself to appreciate just how good it is.

Ian Percy, Barrister

Using MiAI Law feels like having a second brain or counsel sitting next to me. ... It has given me the confidence to take on matters I wouldn't have previously accepted.

Hollia Lam, Principal, LamCo

I am sitting here
in stunned
silence.

The Honourable
Michael Kirby AC
CMG

JUDICIARY

The Problem:

- Respond to a surge in self-represented filings enabled by AI tools.
- Address expanding workload and resultant delay.

Utilise the verification layer to:

- Audit submissions for fabricated authorities and citations.
- Detect misapplied precedent, invented facts, and incoherent claims increasingly present in self-represented matters.
- Test each claim to ensure legal elements are properly articulated, in a system where up to 80% of AI misuse arises from unrepresented litigants.*

And as a practical tool under increasing system pressure:

- Support registry staff and enable controlled, court-approved AI assistance for litigants.
- Utilise case and legislation research features to Improve efficiency and expeditious use of court resources without substituting judicial reasoning.

Litigation Case Studies

Strategy

Counsel use MiAI Law to help set case strategy or to confirm whether their case strategy is on point.

Senior Counsel have reported MiAI Law unearthing additional lines of argument that they had not previously thought of.

Mid Trial

Senior Counsel asked his instructing solicitor for help. Time pressure precluded traditional research. MiAI Law delivered the correct answer which was checked and provided to counsel.

A **judge** unearthed cases on point in 1 minute that her associates did not find after 2 weeks of research.

New Areas of Law

Counsel and lawyers use MiAI Law to get on top of new areas of law, track developing doctrine and legislative changes in 1/4 of the time. Lawyers report increased capability and capacity to take on 20% more matters.

Counsel say advice preparation time is halved with no pressure to discount their work.

Expose Weaknesses

Using our CheckMate features, check your or your opponent's submissions or pleadings for legal integrity. A **judge** has used LawCheck to confirm 2 hallucinations in submissions.

Judgments may be analysed for errors to generate a draft notice of appeal in 1/20th of the time.

OUR GLOBAL PARTNERS



Microsoft enterprise partnership provides GTM support, quota allocation, and GPU infrastructure enabling MiAI's reranker, ensuring scalable deployment and Australian data sovereignty for legal reasoning systems.



HPE partnership delivers on-prem sovereign AI infrastructure, with MiAI deployed via Docker containers, supported by joint GTM initiatives, launching in Australia and expanding internationally thereafter.



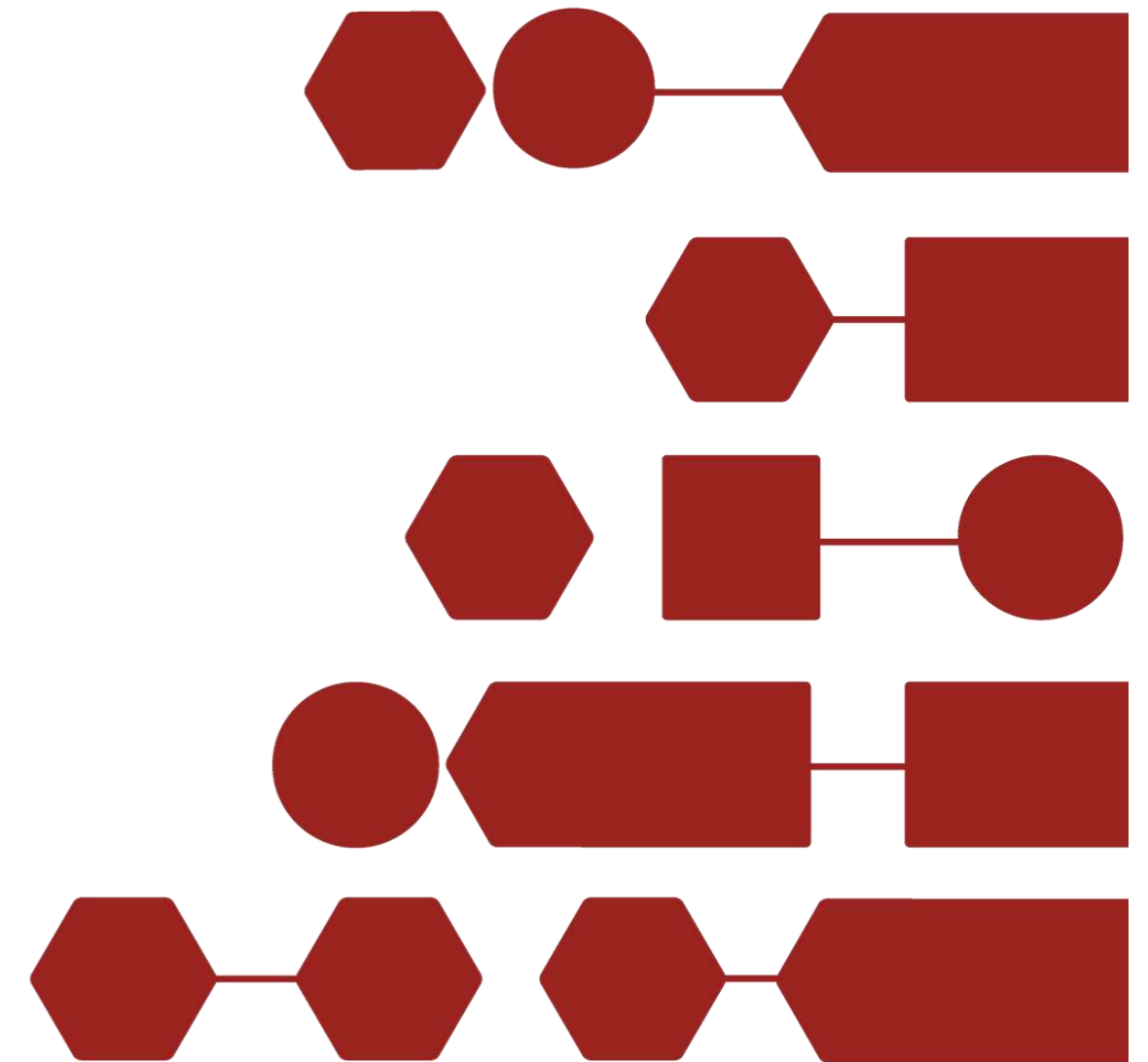
One-year partnership with ACC as featured TechMate, including dedicated website presence and inclusion in ACC email newsletters, driving visibility, engagement, and direct access to in-house counsel globally.

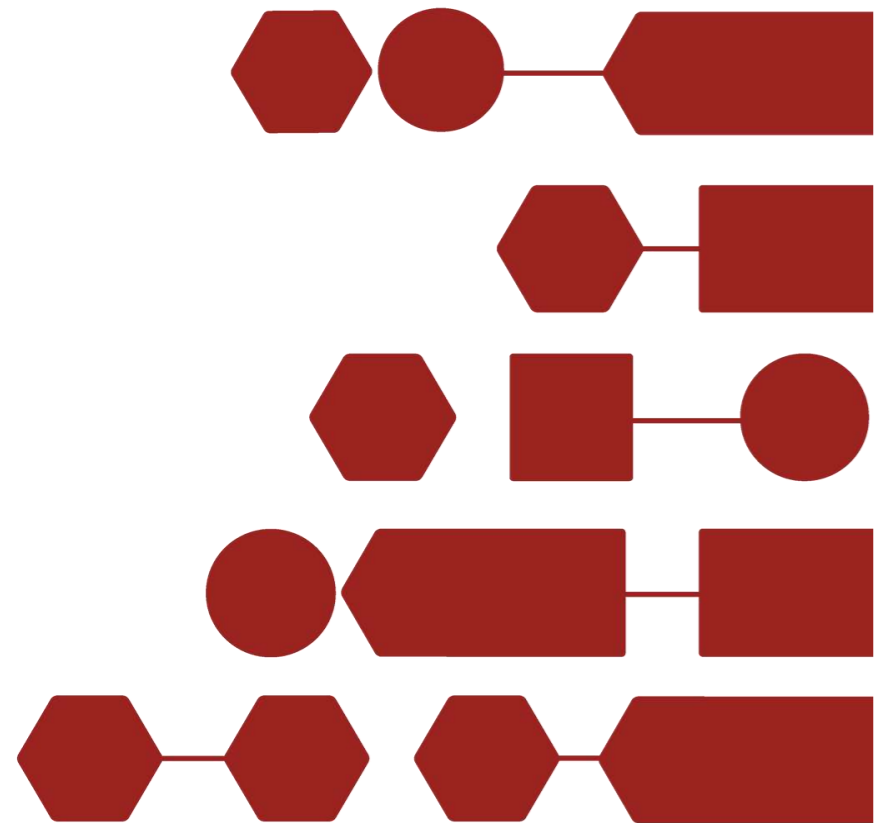
THANK YOU

Founder: Laina Chan

 laina@miai.law

 miai.law





APPENDICES

1. Australian User Interface Snapshot
2. Australian Features
3. Competitive Analysis
4. Internal Benchmark Results tested against Allens Linklaters 30 questions over 10 areas of commercial law

History



Search...



YESTERDAY

- what is M Johnson Building ...
- what is Mead Property Inves...
- what is Canniford v Boles [2...
- what is Acciona Infrastructur...
- what is Hunt Leather Pty Ltd ...
- What is DE v State of New So...
- V1-What is R v Nguyen [202...
- V1-What is St Paul's College ...
- What is Koroma & Ishak [20...
- What is DVictorian Building ...
- What is De Virgilio v The Kin...
- What is Terramin Exploratio...
- What is Zhao v Kontomichal...

Research & Processes

ALL

Legal Summary Contract Review Case Research Legislative Research Check Mate Process Log

Help

Upload up to 20 Case Files

Drag & drop files here, or click to browse
Uploads automatically
Select document type first before uploading

Import files from Cloud
Dropbox, Google Drive, OneDrive supported
*These services requires Third-Party Cookies

Supported formats: PDF (.pdf), Word (.docx) or Markdown (.md) • Max size: 15MB

Note:

- Credit allocation is dynamically determined by document page count.
- Up to 20 documents may be uploaded per batch and will be automatically queued for bulk summarisation.
- Execution is contingent upon sufficient available credits.

Document Type

Case Pleading Affidavit

Select from Uploaded Cases

25238_Ltr_of_Response_to_Gilchrist_Connell_v2_19.02.26_copy

Selected Case(s) for Summarisation

X Deselect All

3 25238_Ltr_of_Re... X

Generate Summary

Document Viewer

Download

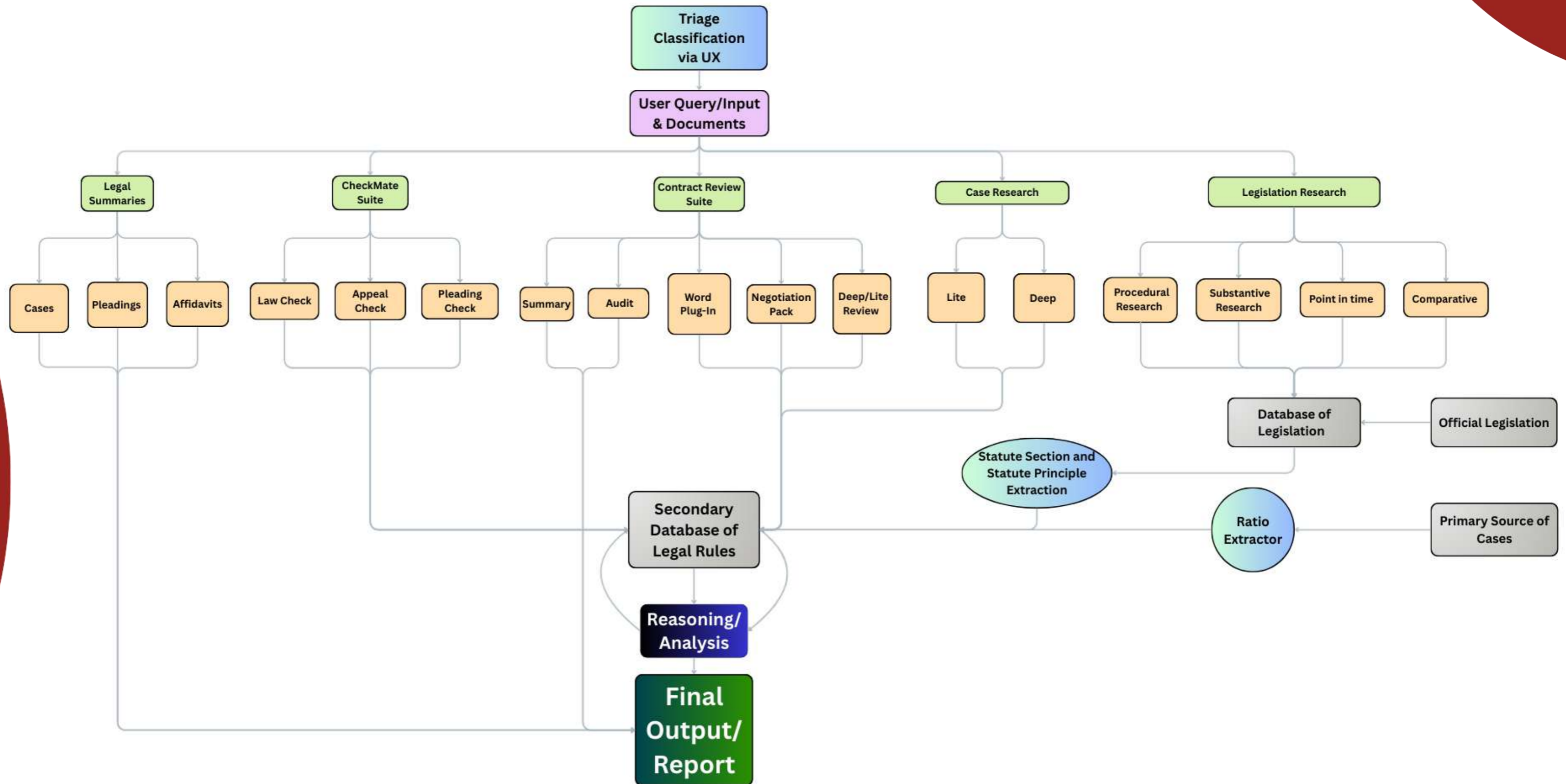
Delete

Clear

Select a document from the sidebar to view

<> DEV

AUSTRALIAN FEATURES



COMPETITIVE ANALYSIS¹

	Harvey	LexisNexis	WestLaw	MiAI
Target User	Enterprise Only	Anybody	Anybody	Anybody
Research	Limited	Data Dump	Data Dump	Precise, Verifiable and Evidence Based Answers
Reasoned Analysis	✗	✗	✗	✓
Time Savings	Limited	Limited	Limited	Substantial
Accuracy	Unknown#	65% accuracy 17% hallucination*	42% accuracy 33% hallucination*	98% accuracy
Client data secured	✗	✗	✗	✓
Performance	Unknown	1-10 mins per query	1-15 mins per query	1-10 mins per query
Understanding new client cases	Unknown	✗	✗	Process 2500 pages (2m tokens) in less than 30 min

The competition cannot come close to the MiAI output which is the equivalent of a PHD level experienced barrister.

Evidence-Based Results

Performance across the 30 Allens Linklaters Australian Law Benchmark questions across 10 different commercial practice areas¹

Criteria	MiAI Law	Leading Competitor
HCA authority surfaced ²	30/30	9/30
Statutory accuracy	30/30	24/30
Nuance/exception detection	30/30	11/30
Commentary reliance ³	0/30	22/30
Audit-ready (lawyer review)	30/30	0/30

Human lawyers: 3+ weeks. MiAI: < 2 hours. **Same standard.**

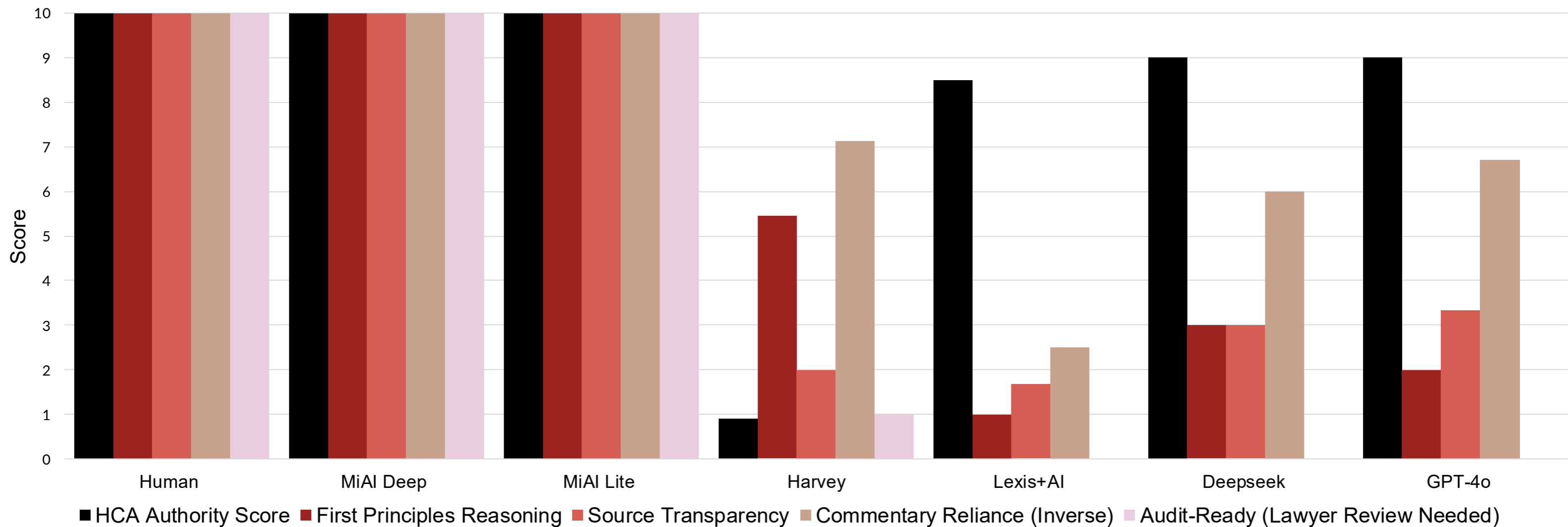
1. based upon internal tests carried out in June 2025

2. when necessary

3. all reasoning from first principles.

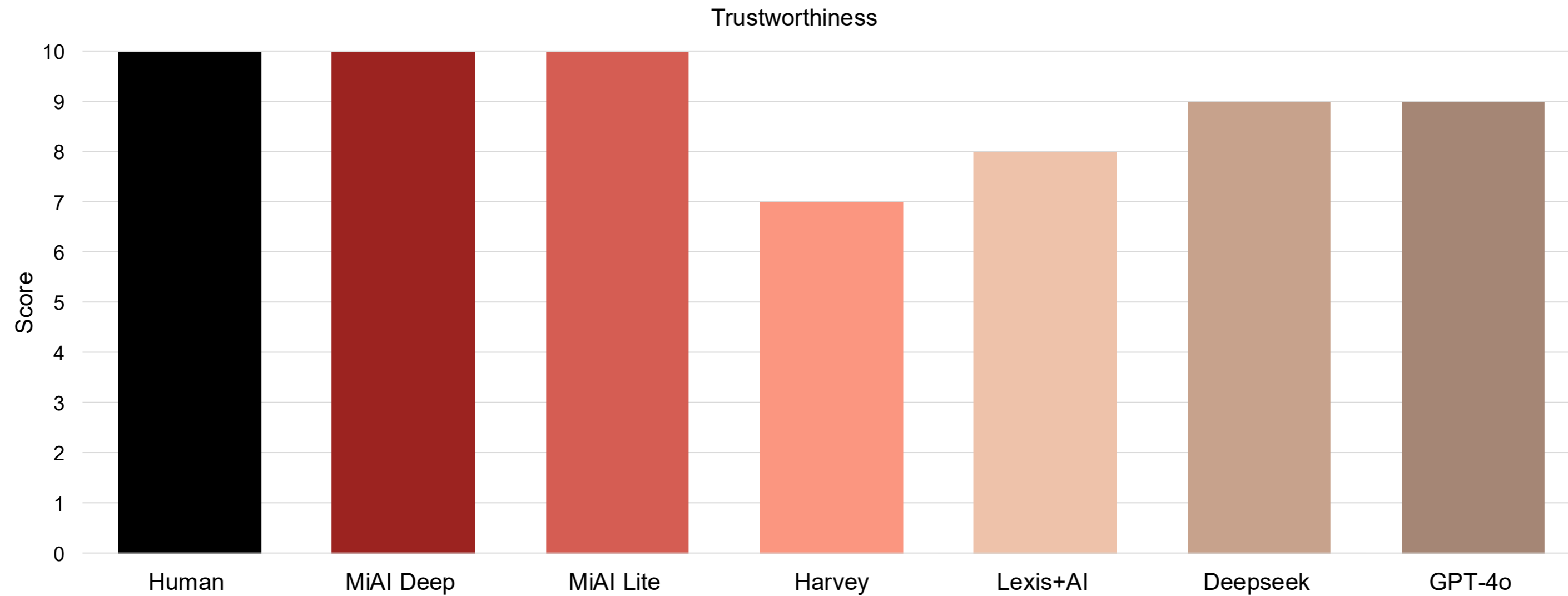
MiAI vs Competitors

Only **Human Lawyers** and **MiAI** Law consistently deliver court-ready, auditable answers.



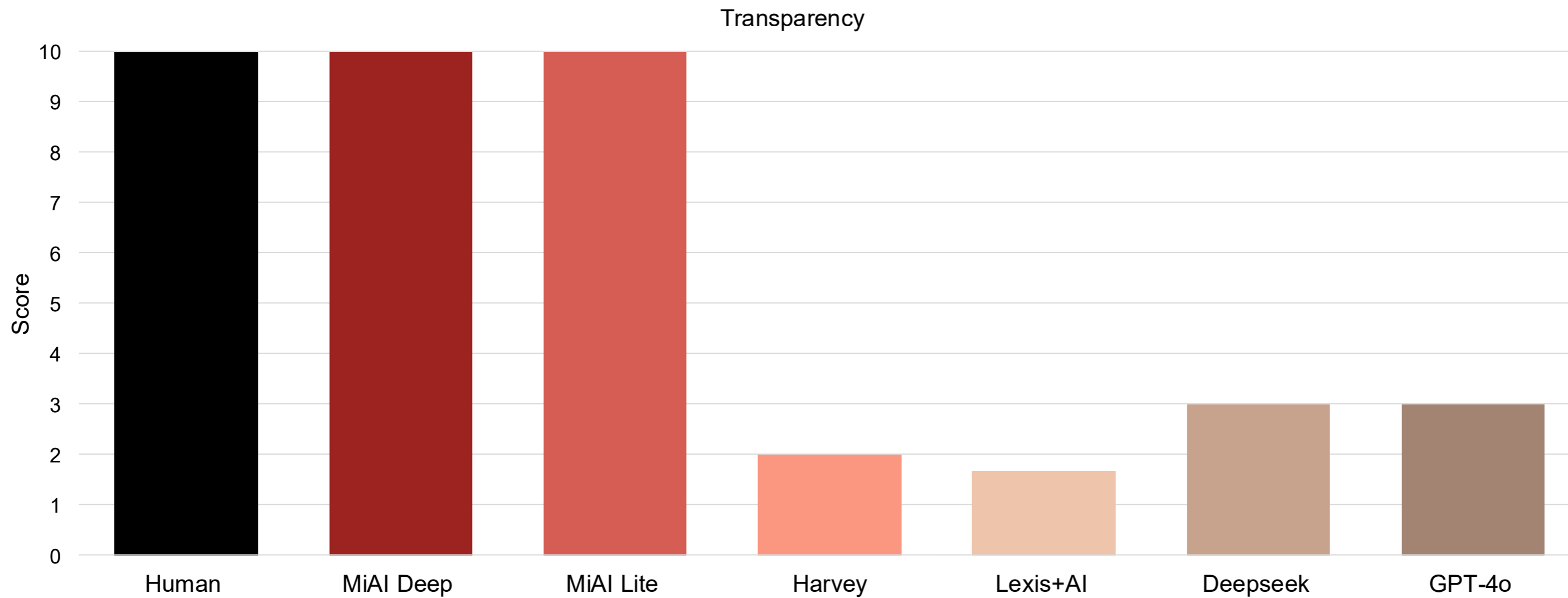
Trustworthy Outputs

Trustworthy outputs from both MiAI Lite and Deep



Transparency

Every MiAI answer is traceable and verifiable—no black box.



Commentary Reliance

MiAI Law never relies on commentary. Others do – often.

